

## **Important references for installation of the RCP-Tool RCP 1.2 (Win 2000/XP)**

The ETS ( ETS2 Vers. 1.3 or ETS3 resp Power Projekt (Vers.4.0 or 4.1) must be installed on your PC before starting the installation of the LEAN-and SMART touch software.

### **Important:**

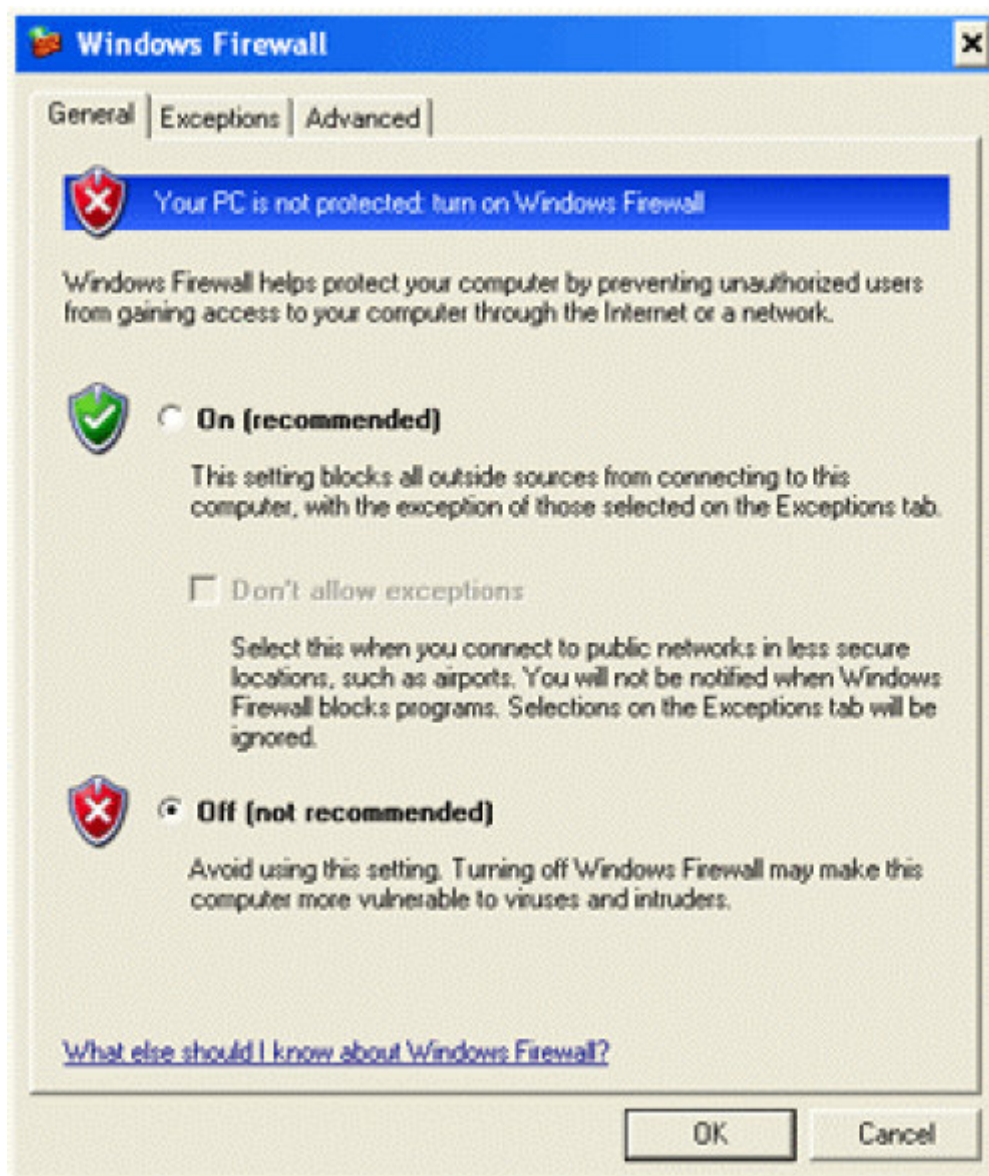
**Please deactivate your Firewall, Virus Scan and further Internet-Security programs before starting the installation.**

In the following it is shown, how to deactivate the Firewall in the Security Centre under Windows XP with Service Pack 2.

- Click on Start → Settings → Control Panel
- Under Control Panel click on Windows Security Centre
- Following dialog box appears. Please click with a double click on the Windows Firewall button.



- Now select 'OFF' and confirm with OK



- The Firewall is now deactivated.

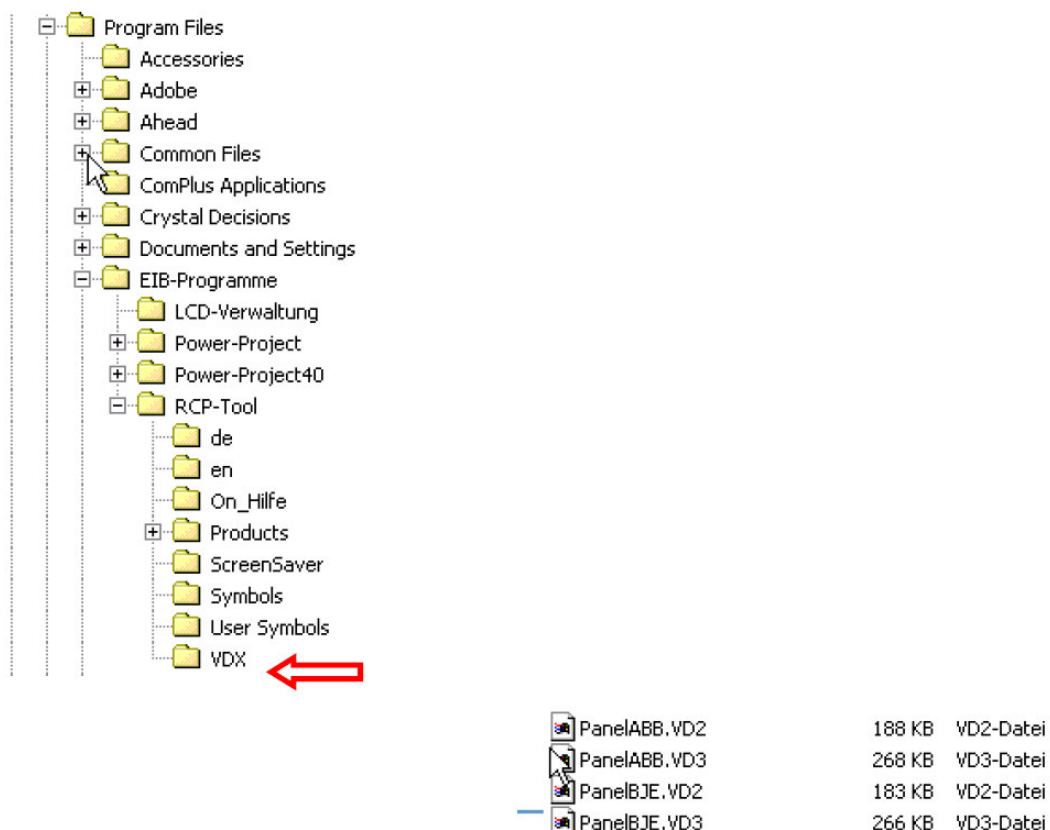
### **Installation:**

1. Start the installation with the file „Setup.exe“  
In case you use the Software as Download from our Support-Center, extract the ZIP-file first!

2. Select your preferred Setup Language (English or German)

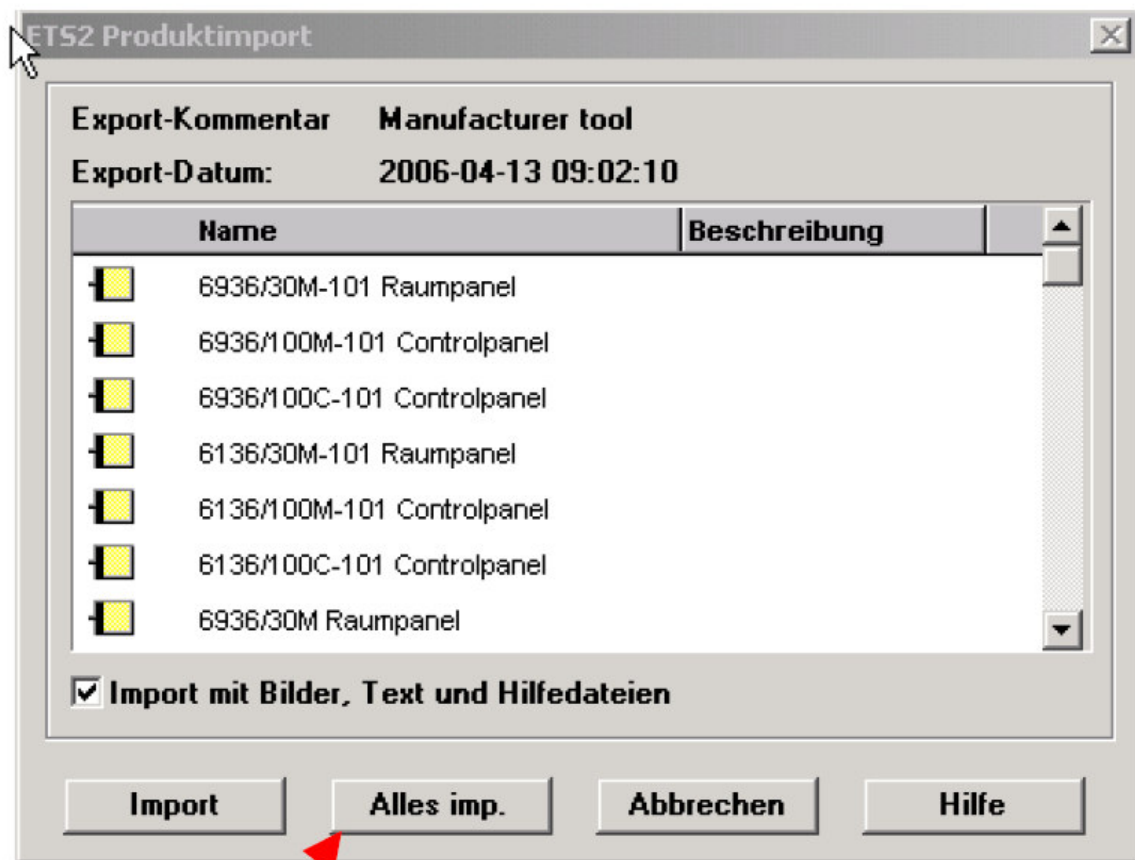


3. When the installation is finished, ETS-User (ETS2 Vers.: 1.3 or ETS3) has to import the product-data from the sub-directory VDX.

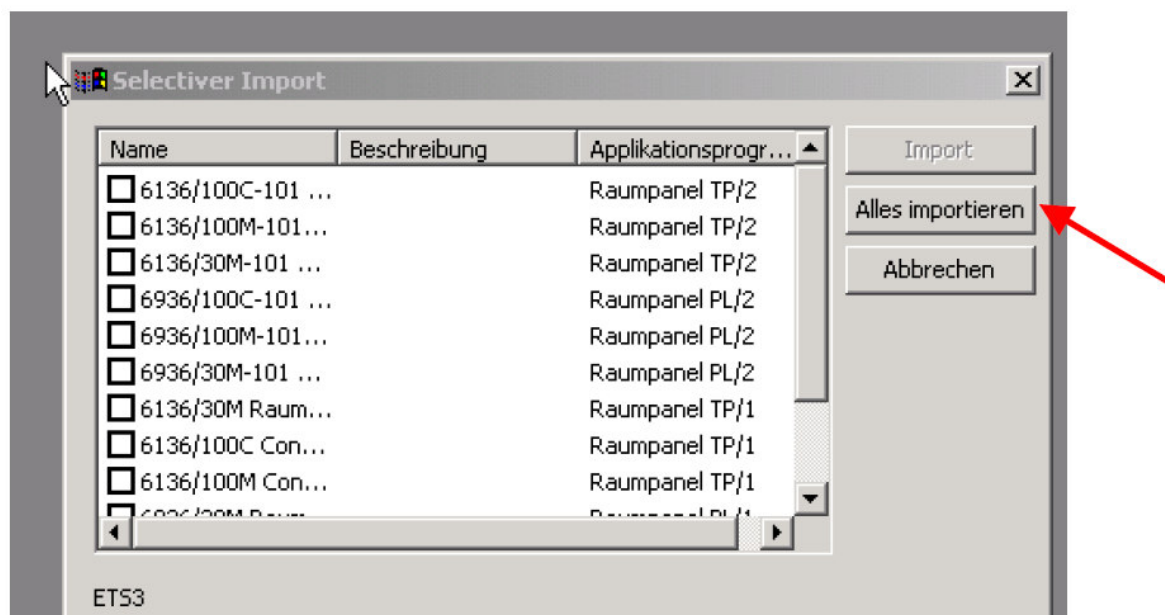


Remark: The Import should be done via function „ Import all“

ETS 2:



ETS 3:



3. In case you already have an older version of the RCP-Software installed on your PC, the deinstallation of them will be done automatically during the installation of the new Software.
4. With the current version of the RCP-Software you can control/operate the LEAN- and SMART touch 6936/30M, /100M, /100C and 6136/30M, /100M, /100C as well.

**Important:**

**Please do not forget to activate your Firewall, Virus Scan or Internet Security Programs again after you have installed the RCP-Toll successfully.**